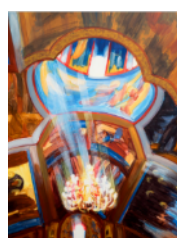
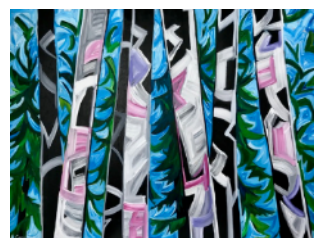




WE SALUTE OUR GENEROUS ARTISTS!  
*please see pages below for bios and contact information*





**The following works were generously  
donated by talented Canadian artists  
for the YWCA 2018  
'Home is Where the Art Is'  
fundraising auction.  
For more information on their work,  
please see bios and contact  
information below.**

## **ERIN ARMSTRONG**

Erin is a contemporary figurative artist working and living in Toronto. Her work looks into the human imagination as it is expressed visually. She is particularly intrigued by the ways in which the mind can conjure and create worlds by piecing together memory, experience, and the ability of the mind's eye to render a non-reality.

[www.erinarmstrongart.com](http://www.erinarmstrongart.com)



**DIVENIRE**

## MIKE SMALLEY

Mike Smalley has explored the complexities of abstraction for over a decade. What has emerged from the surfaces of his work are glimpses of his life, environment, and the legacy of a four-decade career in advertising. The results are expressionistic vistas that extend beyond pure abstraction. His work has been featured at shows in Toronto, Montreal, Miami, New York and London.

[www.mikesmalley-art.com](http://www.mikesmalley-art.com)



**UNTITLED #17-7**

## BYRON HODGINS

Purple Martin Colony Birdhouse was painted en plein air on the southern edge of Grenadier pond in High Park. Byron Hodgins received a B.F.A from Nova Scotia School of Art and Design. He uses landscape like a mirror through colour, abstract symbolism, and grand romantic gestures the visible exterior manifest the invisible interior until the two are irrevocably intermingled.

[www.byronhodgins.com](http://www.byronhodgins.com)



**SHELTER, PURPLE MARTIN  
COLONY BIRDHOUSE**

## MARA KORKOLA

Growing up on the north shore of Lake Superior, Mara Korkola was greatly influenced by her wild surroundings and understood at an early age, the beauty, fragility and sometimes danger associated with nature. Her practice over the last two decades has encompassed cities, forests and airports. The complexity and density of these places is captured in her paintings that compress a world of information into small panels.

[www.mara.korkola.com](http://www.mara.korkola.com)



NO PLACE 420

## FRANCES THOMAS

Frances Thomas was born in Parry Sound and received both her BFA and MFA from York University. She has participated in residencies in Pouch Cove, Newfoundland, Triangle Arts in Brooklyn, New York and in 2016 spent three months in Berlin on a self-directed residency. She is the recipient of the prestigious Sarick Purchase Award for excellence in thesis work and currently lives and works in Barrie.

[www.francesthomas.ca](http://www.francesthomas.ca)



SILVER LINING

## JAMES KENNEDY

James Kennedy, a francophone visual artist born in Quebec, lives and works in Montreal. Using techniques such as laser cutting, engraving, serigraphy and photography, he creates large steel panels in which he engraves or cuts out both organic and figurative forms, in an effort to highlight the beauty and the robustness of the material while exploring its physical properties and its links to geology, geography and industry.

[www.jameskennedy.ca](http://www.jameskennedy.ca)



QUEEN STREET BRIDGE

## DIANE LABATT

Montreal Artist Diane Labatt explores colours through patterns and textures. Inspired by John Lennon's iconic song, "Imagine" reflects his pursuit of peace and harmony. Ideals that remain very relevant today.

[www.facebook.com/dianelabattpaintings/](http://www.facebook.com/dianelabattpaintings/)



IMAGINE

## KRISTIN MORTHENS

Kristin Morthens graduated from OCAD University in 2018, where she was Awarded with The Mrs. W.O. Forsyth Award. Morthens' work explores narratives of semipermeable boundaries, through the investigation of anthropomorphic shapes.

[www.kristinmorthens.com](http://www.kristinmorthens.com)



HAVING MANY ARMS  
WITHOUT A GRIP

## SANDY KOLPAKOW

"Silk" is inspired by the gorgeous and vibrant colours of sari silks from India.

Sandy lives in Toronto where she maintains a studio in her home, and continues to pursue her love of creating works that capture the beauty in the our every day world.

[sandy.kolpakow@gmail.com](mailto:sandy.kolpakow@gmail.com)



SARI SILKS

## SUZANNE NACHA

Suzanne has exhibited her artwork in Canada, the US, and Europe and is represented in public and private collections, including the Department of Foreign Affairs and International Trade, the National Bank of Canada, The Donovan Collection and the Robert McLaughlin Gallery. She has taught in the Fine Art departments of OCAD, Sheridan/UTM and York University.

[www.suzannenacha.com](http://www.suzannenacha.com)



**OUTPOST**

## PAM MAYHEW

Pam Mayhew is a Canadian artist known for her lively abstractions that feature bold, gestural brushstrokes and a joyful palette. Current works allude to land and waterscapes of Ontario while abstracting the image to allow the viewer room to interpret the compositions according to their own life experiences.

[www.pammayhewstudio.com](http://www.pammayhewstudio.com)



**THAT WINTER MOMENT**

## ALEXANDER IRVING

Toronto based artist Alexander Irving holds an MFA from York University and a BFA from the Nova Scotia College of Art and Design. He has shown at Birch Libralato, Blackwood Gallery and Diaz Contemporary and in 2009 his work was included in Carte Blanche 2: Painting - a survey of new Canadian painting. In 2012 Irving's work was included in the ambitious 60 Painters exhibition and catalogue.

[alexander.irving@sympatico.ca](mailto:alexander.irving@sympatico.ca)

## ANGELA SMITH

Angela is a Toronto based landscape and animal portrait artist. From an early age, she loved to draw, paint and create which led her to study Fine Arts and Interior Design. Her past exhibitions include the Toronto West ART Tour, the North Toronto Art Walk, and the Lawrence Park Art Show. Angela has participated in group shows at Toronto City Hall, Wychwood Gallery, Living City Health, and is an art facilitator at the Art for Cancer Foundation.

[www.angelasmithartist.com](http://www.angelasmithartist.com)



JANUS



FOREST TALK



## MICHELLE FORSYTH

Michelle Forsyth is an interdisciplinary visual artist living with Parkinson's disease. She received her BFA from the University of Victoria in 1996, and her MFA at Rutgers University in 2002. Forsyth is known for her cross-disciplinary work including painting, textiles, print media, animation, sculpture and photography. She makes work about the home and employs text in her work to address disability in subtle ways.

[www.michelleforsyth.com](http://www.michelleforsyth.com)



FOOTNOTES

## ELEANOR LOWDEN

Eleanor Lowden has been a professional artist for more than 30 years. She has been a member of the Toronto Watercolour Society since 1994 and in 2015 was accepted by jury into the Ontario Society of Artists. Eleanor has taught the drawing class at the University of Calgary and teaches "Courageous Watercolour" and acrylic painting workshops at various venues in Toronto.

[www.eleanorlowden.com](http://www.eleanorlowden.com)



HERE COMES THE RAIN

## JOE FLEMING

Joe Fleming lives and works in Toronto and has lectured at universities in Canada, the US and South East Asia since 1993. His paintings are included in many public and private collections and he has exhibited in several international art fairs: Art Stage (Singapore), FIAC (Paris), Arte Cologne (Germany), Scope (New York and Miami), Papier (Montreal) and TIAF (Toronto).

[www.joefleming.com](http://www.joefleming.com)



PORKCHOP

## MONICA TAP

Monica Tap is a Toronto-based artist represented by MKG127. Her paintings are arrangements assembled from fragments culled from painting's history and her own snapshots. She uses landscape to consider questions of time and history, technology and memory. For example, the orange dog that Paul Gauguin included in many of his paintings is discovered here, in Trinity Bellwoods Park.

[www.monicatap.com](http://www.monicatap.com)



TRINITY (VISITOR)

## MELISSA DOHERTY

Melissa Doherty's work is included in significant public and private collections. She is interested in landscape as a fabric, and how humans rearrange and supplant it. Her work is included in Carte Blanche Volume 2: Painting, a survey of contemporary Canadian painters and is represented in numerous collections, including Sir Elton John and David Furnish, University of Toronto, the Bank of Montreal, the Four Seasons, and the Royal Bank of Canada.

[www.melissadoherty.com](http://www.melissadoherty.com)

## ANDA KUBIS

Anda Kubis is a recognized Canadian abstract painter working in expanded digital, material, and traditional oil painting processes. Due to the prominence of colour in her artwork, Kubis consciously considers how the engagement with aesthetics and creativity positively impacts human flourishing and quality of life. She is an Associate Professor in the Drawing and Painting Program, in the Faculty of Art and is represented in Canada by Bau-Xi Gallery in Toronto.

[www.andakubis.ca](http://www.andakubis.ca)



**THE GREEN AND THE  
GREY**



**THREE O'CLOCK (EDITION  
1/3)**

## NICOLE KATSURAS

Nicole Katsuras received her MFA from Central Saint Martins School of Art and Design in the United Kingdom.. She has exhibited in Toronto, Vancouver, Calgary, London, Seoul and Paris. Her work is included in private and public collections in North America and Europe. She approaches her art with a playful sense of imagination. Her vivid abstractions hint at notions of the natural world: jungles, islands, maps, animals and flowers.

[www.nicolekatsuras.com](http://www.nicolekatsuras.com)



VIVID CUBAN WORDS

## KATHARINE HARVEY

St. Dimitrija II is a work from Katharine Harvey's series, Threshold. Her work has been exhibited across Canada and in New York, Los Angeles, Monterey and Hamburg. She has completed several permanent and temporary public art commissions, including Chandelier (2012) and Gardiner Streams (2015). Her works are held in numerous collections in Canada, the United States and Germany.

[www.katharineharvey.com](http://www.katharineharvey.com)



ST. DIMITRIJA II

## LAURA MILLARD

Laura Millard has exhibited her work nationally and internationally. Notable solo and group exhibitions include the Glenbow Museum, the Art Gallery of Hamilton, the Art Gallery of Windsor, La Centrale, the Edmonton Art Gallery and the Kenderdine Gallery University of Saskatchewan, Where Where Exhibition Space (Beijing), Sookmyung Women's University (Korea), St. Lawrence University Art Gallery (New York) and Every. Now. Then. at the AGO.

[www.lauramillard.com](http://www.lauramillard.com)



ICE CIRCLES

## LISA NEIGHBOUR

Lisa Neighbour was born in Montreal and lives and works in Toronto. Recent exhibitions include: Entropy Beach, Open Field Collective, Toronto; Sparrow Night, Museum London, London; Gumball Machine of Fate, Various locations, Toronto; #\*&^%\$!! I Broke My Glasses! Sointula Art Shed, BC; Smithereens, YYZ Artists' Outlet, Toronto; This is My Punishment, G Gallery, Toronto; and Pilot X: Death in the City, Le Gallery, Toronto.

[www.lisaneighbour.com](http://www.lisaneighbour.com)



TABLE LAMP ORANGE / GREEN

## TOSH JEFFREY

As a landscape painter, Tosh varies the perspective of his experience by magnifying details of the urban terrain. This magnification fuses with contemporary expression into a graffiti inspired cocktail of abstraction and realism; arousing the senses and energizing the viewer. "My paintings illustrate energy and vitality in the beautiful world around us."

[www.toshjeffrey.com](http://www.toshjeffrey.com)



SLASH

## CATHERINE BEAUDETTE

Catherine Beaudette is a Canadian artist, curator and adjunct Professor at OCAD University. Born in Montréal, she currently divides her time between Toronto and Newfoundland. Her practice stems from both places where she collects objects, artifacts and specimens to form the basis of her artwork.

[www.catherinebeaudette.com](http://www.catherinebeaudette.com)



SEAWEED BOUQUET 13

# SPECIAL THANKS

to our project partners for their generosity, their time and their expertise - the design could not have been created without you

## PROJECT PARTNERS

---



HHAngus



THANK YOU to our generous sponsors -  
*2018 Home is Where the Art Is* auction

## PRESENTING PARTNERS

---



THE ODETTE  
FOUNDATION

## GOLD PARTNERS

---

Susie & Greg Belton

## SILVER PARTNERS

---

Mary Calder

The McQuaig Family

Renee Ballard



Eileen Farrow  
Sales Representative



CHRISTIE'S  
INTERNATIONAL REAL ESTATE

## PARTNERS

---



stratus



HAWORTH® Collection

